



English



Español



Italiano



Deutsch



Français



Nederlands



Polskie

Engineering Data

239

Datos de ingeniería • Dati ingegneristici • Technische gegevens

Données d'ingénierie • Technische gegevens • Dane Inżynieria

Tensioner Arms

243

Brazos de tensor • Braccia di tenditore • Spanner-Arme

Bras tendeur • Spanner wapens • ramiona napinaczy

Idler Sprocket Sets

244

Sistemas de rueda dentada intermedia • Pacchi pignoni folli

Spannrolle Ritzelpakete • Ensembles de pignon pignon fou

Idler tandwiel sets • zestawy łańcuchowe napinające

Idler Roller Pulley Sets

245

Sistemas de polea rodillo rodillos • Idler rulli puleggia

Spannrolle Riemenscheibe Rollensätze • Ensembles de poulie tendeurs rouleau

Idler roller katrol sets • Zestawy rolką pośredniczącą



TENSIONING TECHNOLOGY

Chain & V-Belt Tensioning

Roller chains are power transmission components with positive transmission which, by virtue of their design are subject, depending on quality, to elongation as a result of wear of 1 to 3% of their total length. In spite of this elongation, due to aging, a roller chain transmits the occurring torques effectively providing it is periodically re-tensioned. Without tension adjustment, the slack side of the chain becomes steadily longer, oscillates and reduces the force transmitting wrap angle of the chain on the sprockets.

The chain no longer runs smoothly off the teeth of the sprockets, producing uneven running of the entire drive and supporting wear. The service life of the chain drive can be extended considerably by the use of an automatic chain tension adjuster. The tensioning element prevents the slack side of the chain from 'sagging' or 'slapping' by its automatic operation and very wide tensioning range for compensating this given elongation.

The DUNLOP tensioning element is based on the rubber spring principle. According to application it is supplemented with the appropriate idler sprocket for chain drives or with a belt roller pulley in belt tensioner applications.

Pre-tensioning

With the tensioning element the necessary travel and simultaneously the corresponding initial tension force can be accurately adjusted by a torsion angle scale and indicating arrow. Excessive initial pre-tensioning of the chain should be avoided in order to reduce the tensile force and surface pressure on the links.

Vibration Damping

The DUNLOP tensioning element, based on a system of rubber springs, absorbs considerably the chain vibration due to internal molecular friction in the rubber inserts. The rubber spring effectively absorbs the vibrations, resulting from the polygon effect, which also positively influences the noise level of the complete chain drive.

INSTALLATION

The idler sprocket is installed in arm position 'normal' or 'hard' in the required position and secured with the supplied nuts.

The laterally adjustable bearing on the thread permits simple and rapid adjustment of the idler sprocket to the chain track. The central fixing of the tensioning element with a single screw saves a great deal of time in installation. In addition, only one fixing hole is required on the 'machine side'.

On smooth, clean and torsionally rigid surfaces the resistance of the frictional contact between the tensioner housing and the machine element is a multiple of the maximum initial tensioning torque at 30°.

TENSIONER TYPE SE

The tensioning element with the specification SE (SE 11 to SE 45) is the mostly used standard unit for tensioning all kinds of chain and belt drives. This unit is designed for applications in temperature range from -40°C to $+80^{\circ}\text{C}$.

Dunlop Idler Sprocket Set Type N

The DUNLOP idler sprocket set completes the tensioning element for applications in chain drives. The idler sprocket runs on a self-lubricating ball bearing Type 2 Z.

Dunlop Idler Roller Pulley Set Type R

The DUNLOP idler roller pulley set installed on the relevant SE unit is an ideal belt tensioner. The roller is made of high quality industrial plastic material with two self lubricating ball bearings Type 2 Z.

GENERAL INFORMATION

DUNLOP tensioners should be installed on a stiff, even and clean machine part means of the central bolt. The frictional connection on flange is usually fully sufficient for final positioning. The positioning notch on flange can be used to assure the tensioner additionally on uneven and dirty surfaces by setting a roller pin.

Tensioning Force F

The tensioning force can be continuously adjusted. The max. pre tensioning angle is $+30^{\circ}$ out of neutral position. Tensioning force table for types SE by using hole-position 'normal' for idler sprocket & idler roller pulley fixation.

| Size SE | Pre-tension $< 10^{\circ}$ | | Pre-tension $< 20^{\circ}$ | | Pre-tension $< 30^{\circ}$ | |
|---------|----------------------------|--------|----------------------------|--------|----------------------------|--------|
| | F (N) | s (mm) | F (N) | s (mm) | F (N) | s (mm) |
| 11 | 15 | 14 | 40 | 28 | 80 | 40 |
| 15 | 25 | 17 | 65 | 34 | 135 | 50 |
| 18 | 75 | 17 | 180 | 34 | 350 | 50 |
| 27 | 150 | 22 | 380 | 44 | 800 | 65 |
| 38 | 290 | 30 | 730 | 60 | 1500 | 87 |
| 45 | 500 | 39 | 1300 | 78 | 2600 | 112 |

Tensioning Force F

Table mentioning the tightening moment for the central screw (included in scope of delivery).

| Thread Size | Quality 8.8 |
|-------------|-------------|
| M6 | 10 Nm |
| M8 | 25 Nm |
| M10 | 49 Nm |
| M12 | 86 Nm |
| M16 | 210 Nm |
| M20 | 410 Nm |

When fixing the idler sprockets and idler roller pulleys in arm position 'hard', the tensioning force will increase by about 25%.

Mounting Instructions

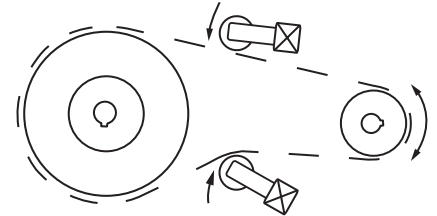
Normal Positioning

The DUNLOP tensioning elements are always positioned on the slack side of the chain. They should be fitted as close as possible to the big wheel and hide the chain from the outer side. The ideal positioning of the tensioning arm is nearly parallel to the chain drive.



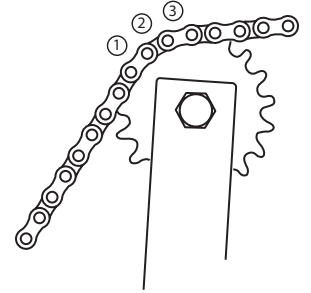
Reversible Chain Drives

The tensioning elements must be placed on both sides of the chain. Due to the reversible function there results a much higher pressure on the load side than on the slack side of the chain. It is therefore advised to use oversized tensioning elements and a pretension angle of max 15°.



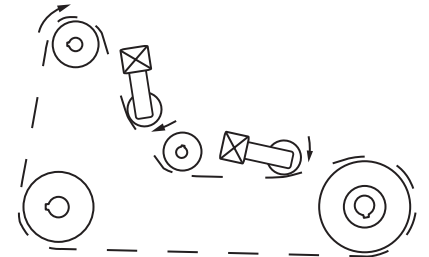
Chain Engagement

At least 3 teeth of the idler sprocket must engage into the roller chain when tensioning the chain for the first time. The minimum number of engaged sprocket teeth between the tensioning wheel and chain is 3.



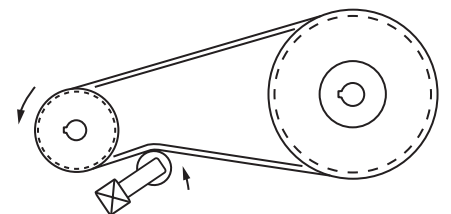
Mounting

The chain tensioner must be adjusted in the axial and angular direction. The tensioning area should be nearly in parallel position to the chain and in the direction of the chain's drive. In case the chain drives are extremely long it is possible to fit several chain tensioners in order to obtain better tensioning and compensation.



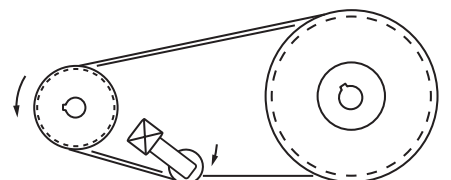
V-Belt Tensioner - Outer Roller

Please refer to the instructions of the belt manufacturer for further information on the belt structure when mounting our DUNLOP belt tensioning elements with flat rollers on the back of the belt. Inner or outer tension rollers must be positioned as far away as possible from the next V-Belt pulley the belt is guided to.



V-Belt Tensioner - Inner Grooved Pulleys

V-Belt pulleys can be mounted as inner rollers at any position on the slack side of the V-Belt (for drives with long axial distances and a high level of vibration we recommend to use pulleys with deep grooves).



INSTRUCTIONS FOR BELT DRIVES

Selection of the adequate DUNLOP Tensioner size

Selection table mentioning the most conventional V-Belt types.

| V-Belt Type | Width (mm) | Height (mm) | Diam. of smaller pulley (mm) | Initial operation test-force F_1^{**} (N) | Initial operation test-force F_0^{**} (N) | Size SE* (without SE-W and SE-B) | | | | |
|-------------|------------|-------------|------------------------------|---|---|----------------------------------|--------|--------|--------|--------|
| | | | | | | 1 Belt | 2 Belt | 3 Belt | 4 Belt | 5 Belt |
| SPZ, SPZX | 10 | 8 | 56-71 | 20 | 16 | 11 | 18 | 18 | 18 | 18 |
| | | | 75-90 | 22 | 18 | 11 | 18 | 18 | 18 | 27 |
| | | | 95-125 | 25 | 20 | 15 | 18 | 18 | 18 | 27 |
| | | | ≥ 125 | 28 | 22 | 15 | 18 | 18 | 27 | 27 |
| SPA, SPAX | 13 | 10 | 80-100 | 28 | 22 | 15 | 18 | 18 | 27 | 27 |
| | | | 106-140 | 38 | 30 | 15 | 18 | 27 | 27 | 27 |
| | | | 150-200 | 45 | 36 | 18 | 18 | 27 | 27 | 27 |
| | | | ≥ 200 | 50 | 40 | 18 | 18 | 27 | 27 | 38 |
| SPB, SPBX | 16 | 13 | 112-160 | 50 | 40 | 18 | 18 | 27 | 27 | 38 |
| | | | 170-224 | 62 | 50 | 18 | 27 | 27 | 38 | 38 |
| | | | 236-355 | 77 | 62 | 18 | 27 | 38 | 38 | 38 |
| | | | ≥ 355 | 81 | 65 | 18 | 27 | 38 | 38 | 38 |
| SPC, SPCX | 22 | 18 | 224-250 | 87 | 70 | 18 | 27 | 38 | 38 | 38 |
| | | | 265-355 | 115 | 92 | 27 | 38 | 38 | 45 | 45 |
| | | | ≥ 375 | 144 | 115 | 27 | 38 | 38 | 45 | 45 |
| Z, ZX | 10 | 6 | 56-100 | 5-7.5 | | 11 | 11 | 11 | 15 | 15 |
| A, AX | 13 | 8 | 80-140 | 10-15 | | 11 | 15 | 18 | 18 | 18 |
| B, BX | 17 | 10 | 125-200 | 20-30 | | 15 | 18 | 18 | 27 | 27 |
| C, CX | 22 | 12 | 200-400 | 40-60 | | 18 | 27 | 27 | 38 | 38 |
| D, DX | 32 | 19 | 355-600 | 70-105 | | 18 | 27 | 38 | 38 | 45 |

*General basic selection criteria:

$$F = F_1 \cdot z \cdot 2$$

F Resulting tensioning force by a pre-tension angle of 20°.

F_1 Initial operation test-force according guidelines of the belt manufacturer.

z Quantity of belts in drive.

2 Multiplier for the compensation of belt slippage and/or of centrifugal force generated on belt strands.

**required test-force for belt deflection of 16mm per 1000mm of centre distance. The relevant deflection by shorter or longer centre distance has to be interpolated accordingly.



TENSIONERS



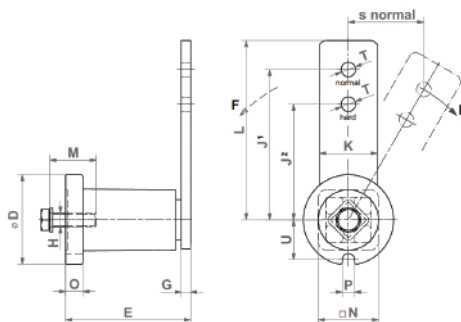
BELT AND CHAIN TENSIONERS

Description

Tensioning devices SE are available for both roller chain and V-Belt applications.

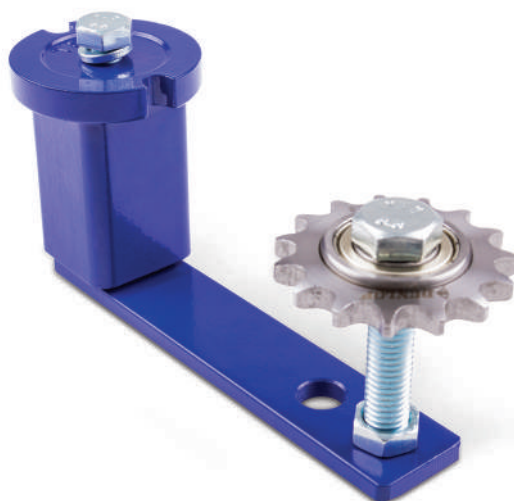
A range of idler sprockets to suit standard roller chain pitch sizes from O6B-1 to 24B-1 are available.

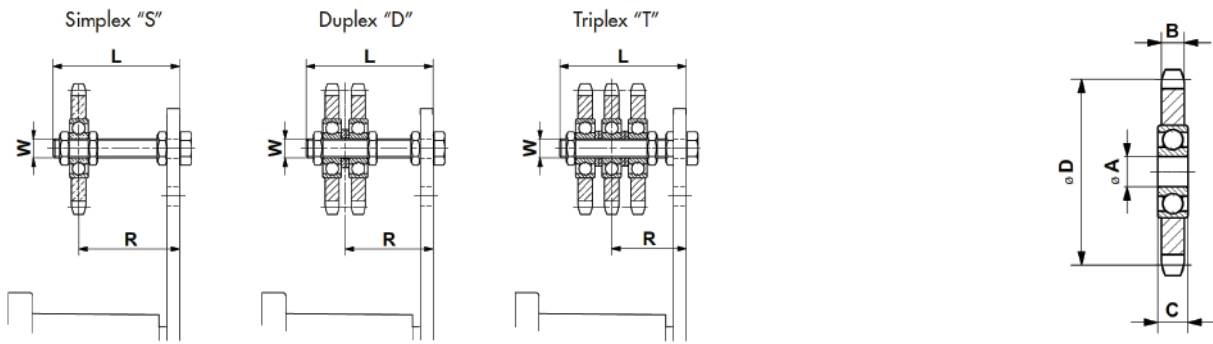
A range of idler roller pulleys are also available to suit standard V and wedge belt sections from Z/SPZ to C/SPC. Both designs have 2Z bearings fitted to the bore.



TENSIONER ARM TYPE SE

| Part No. | D | E | | G | H | J ¹ | J ² | K | L | M | N | O | P | T | U | Weight (kg) |
|----------|-----|-----|--------------|----|-----|----------------|----------------|----|-------|----|----|------|------|------|------|-------------|
| SE 11 | 35 | 51 | +1 -0.5 | 5 | M6 | 80 | 60 | 20 | 90 | 20 | 22 | 6 | 8 | 8.5 | 16.5 | 0.2 |
| SE 15 | 45 | 64 | +1 -0.5 | 5 | M8 | 100 | 80 | 25 | 112.5 | 25 | 30 | 8 | 8.5 | 10.5 | 20.8 | 0.4 |
| SE 18 | 58 | 79 | +1.5 -0.5 | 7 | M10 | 100 | 80 | 30 | 115 | 30 | 35 | 10.5 | 8.5 | 10.5 | 25.3 | 0.6 |
| SE 27 | 78 | 108 | +2 -0.5 | 8 | M12 | 130 | 100 | 50 | 155 | 40 | 52 | 15 | 10.5 | 12.5 | 34.3 | 1.7 |
| SE 38 | 95 | 140 | +2 -0.5 | 10 | M16 | 175 | 140 | 60 | 205 | 40 | 66 | 15 | 12.5 | 20.5 | 42.0 | 3.6 |
| SE 45 | 115 | 200 | +3 -1 | 12 | M20 | 225 | 180 | 70 | 260 | 50 | 80 | 18 | 12.5 | 20.5 | 52.0 | 6.4 |

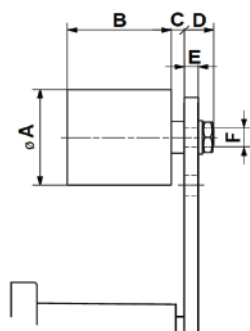




IDLER SPROCKET SETS TYPE N

| Rollerchain | | Part No. | Number of Teeth | W | L | Torque hex nut 0.5d (Nm) | Adjusting Range Track R | Size SE | Weight (kg) |
|--------------------|------------|--------------|-----------------|-----|-----|--------------------------|-------------------------|---------|-------------|
| ANSI | DIN 8187 | | | | | | | | |
| Simplex 'S' | | | | | | | | | |
| 35 | ISO 06 B-1 | N3/8"-10 S | 15 | M10 | 55 | 20 | 22-43 / 23-43 | 15 / 18 | 0.15 |
| 40 | ISO 08 B-1 | N1/2"-10 S | 15 | M10 | 55 | 20 | 23-44 | 18 | 0.20 |
| 50 | ISO 10 B-1 | N5/8"-12 S | 15 | M12 | 80 | 35 | 27-65 | 27 | 0.35 |
| 60 | ISO 12 B-1 | N3/4"-12 S | 15 | M12 | 80 | 35 | 27-65 | 27 | 0.55 |
| 60 | ISO 12 B-1 | N3/4"-20 S | 15 | M20 | 100 | 172 | 38 | 38 | 0.85 |
| 80 | ISO 16 B-1 | N1"-20 S | 13 | M20 | 100 | 172 | 38 | 38 | 1.25 |
| 100 | ISO 20 B-1 | N1 1/4"-20 S | 13 | M20 | 100 | 172 | 45 / 50 | 45 | 2.00 |
| 120 | ISO 24 B-1 | N1 1/2"-20 S | 11 | M20 | 140 | 172 | 45 / 50 | 45 | 2.35 |
| Duplex 'D' | | | | | | | | | |
| 35 | ISO 06 B-2 | N3/8"-10 D | 15 | M10 | 55 | 20 | 27-39 / 28-39 | 15 / 18 | 2.00 |
| 40 | ISO 08 B-2 | N1/2"-10 D | 15 | M10 | 55 | 20 | 30-37 | 18 | 0.35 |
| 50 | ISO 10 B-2 | N5/8"-12 D | 15 | M12 | 80 | 35 | 36-57 | 27 | 0.60 |
| 60 | ISO 12 B-2 | N3/4"-12 D | 15 | M12 | 80 | 35 | 37-56 | 27 | 1.05 |
| 60 | ISO 12 B-2 | N3/4"-20 D | 15 | M20 | 120 | 172 | 50-90 | 38 | 1.35 |
| 80 | ISO 16 B-2 | N1"-20 D | 13 | M20 | 120 | 172 | 55-84 | 38 | 2.10 |
| 100 | ISO 20 B-2 | N1 1/4"-20 D | 13 | M20 | 140 | 172 | 60-102 / 68-102 | 45 | 3.60 |
| 120 | ISO 24 B-2 | N1 1/2"-20 D | 11 | M20 | 140 | 172 | 65-97 / 73-97 | 45 | 4.25 |
| Triplex 'T' | | | | | | | | | |
| 35 | ISO 06 B-3 | N3/8"-10 T | 15 | M10 | 70 | 20 | 33-48 | 18 | 0.25 |
| 40 | ISO 08 B-3 | N1/2"-12 T | 15 | M12 | 80 | 35 | 41-51 | 27 | 0.50 |
| 50 | ISO 10 B-3 | N5/8"-12 T | 15 | M12 | 80 | 35 | 43-50 | 27 | 0.95 |
| 50 | ISO 10 B-3 | N5/8"-20 T | 15 | M20 | 120 | 172 | 56-84 | 38 | 1.25 |
| 60 | ISO 12 B-3 | N3/4"-20 T | 15 | M20 | 120 | 172 | 59-80 | 38 | 1.50 |
| 80 | ISO 16 B-3 | N1"-20 T | 13 | M20 | 160 | 172 | 74-108 | 45 | 2.90 |
| 100 | ISO 20 B-3 | N1 1/4"-20 T | 13 | M20 | 160 | 172 | 78-105 / 86-105 | 45 | 5.20 |
| 120 | ISO 24 B-3 | N1 1/2"-20 T | 11 | M20 | 160 | 172 | 90-111 / 98-111 | 45 | 6.20 |

| Rollerchain | | Part No. | Number of Teeth | A | B | C | D | Weight (kg) |
|-------------|----------|------------|-----------------|----|------|----|--------|-------------|
| ANSI | DIN 8187 | | | | | | | |
| 35 | ISO 06 B | N3/8"-10 | 15 | 10 | 5.3 | 9 | 45.81 | 0.06 |
| 40 | ISO 08 B | N1/2"-10 | 15 | 10 | 7.2 | 9 | 61.08 | 0.15 |
| 40 | ISO 08 B | N1/2"-12 | 15 | 12 | 7.2 | 12 | 61.08 | 0.15 |
| 50 | ISO 10 B | N5/8"-12 | 15 | 12 | 9.1 | 12 | 76.36 | 0.27 |
| 50 | ISO 10 B | N5/8"-20 | 15 | 20 | 9.1 | 15 | 76.36 | 0.29 |
| 60 | ISO 12 B | N3/4"-12 | 15 | 12 | 11.1 | 12 | 91.63 | 0.47 |
| 60 | ISO 12 B | N3/4"-20 | 15 | 20 | 11.1 | 15 | 91.63 | 0.47 |
| 80 | ISO 16 B | N1"-20 | 13 | 20 | 16.1 | 15 | 106.14 | 0.88 |
| 100 | ISO 20 B | N1 1/4"-20 | 13 | 20 | 18.5 | 15 | 132.67 | 1.60 |
| 120 | ISO 24 B | N1 1/4"-20 | 11 | 20 | 24.1 | 15 | 135.23 | 1.93 |



BELT DRIVE TENSIONING ROLLER

| Part No. | Max. Speed (rpm) | Max. Belt width | A | B | C | D | E max. | F | Torque hex. nut (Nm) | Size SE | Weight (kg) |
|----------|------------------|-----------------|----|-----|----|----|--------|-----|----------------------|---------|-------------|
| R 11 | 8000 | 30 | 30 | 35 | 2 | 14 | 5 | M8 | 20 | 11 | 0.08 |
| R 15/18 | 8000 | 40 | 40 | 45 | 6 | 16 | 7 | M10 | 20 | 15/18 | 0.17 |
| R 27 | 6000 | 55 | 60 | 60 | 8 | 17 | 8 | M12 | 35 | 27 | 0.40 |
| R 38 | 5000 | 85 | 80 | 90 | 8 | 25 | 10 | M20 | 160 | 38 | 1.15 |
| R 45 | 4500 | 130 | 90 | 135 | 10 | 27 | 12 | M20 | 160 | 45 | 1.75 |

